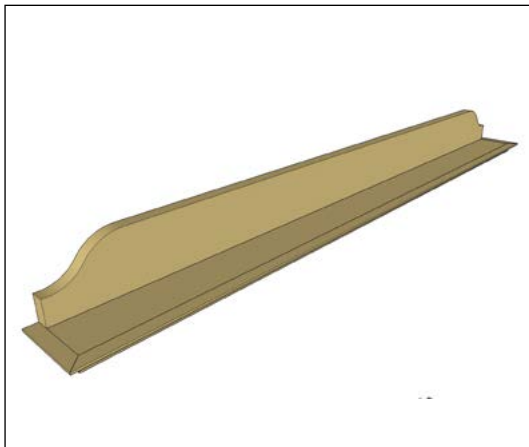




PROJECT PLANS

STYLISH PHOTO SHELF



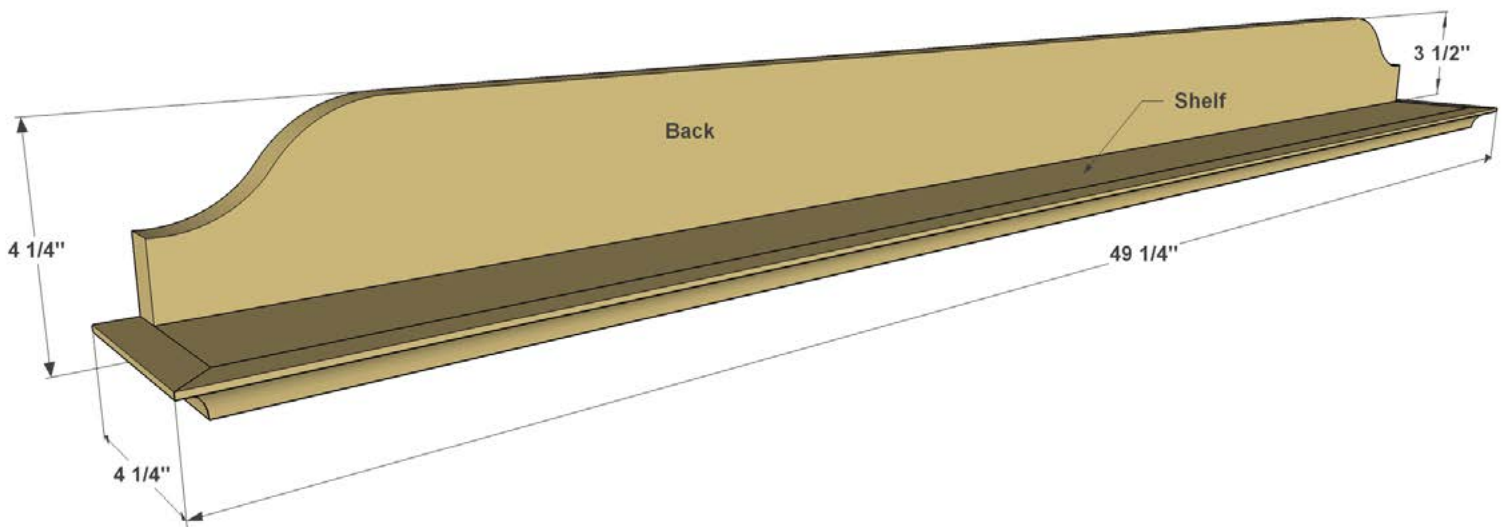
Here's a simple way to display favorite photos, and do it with understated style. This photo shelf is made up of just two main pieces that are cut from an off-the-shelf 1x4 pine board. Those pieces get connected with simple, sturdy Kreg Joints™.

To dress the shelf up, the back piece gets gentle curves that are cut using a jig saw. Then, the shelf gets cove molding wrapped around, which really dresses things up without adding a lot of work.



Safety:

Attention: Almost any do-it-yourself project involves risk of some sort. Your tools, materials, and skills will vary, as will the conditions at your project site. Kreg® Tool Company ("Kreg") has made every effort to be complete and accurate in the instructions and other content contained in this document. However, Kreg® will not assume any responsibility or liability for damages or losses sustained or incurred in the course of your project or in the use of the item you create. Always follow the manufacturer's operating instructions in the use of tools, check and follow your local building codes, and observe all commonly accepted safety precautions. We strive to be accurate, but reserve the right to correct any errors.



Materials:

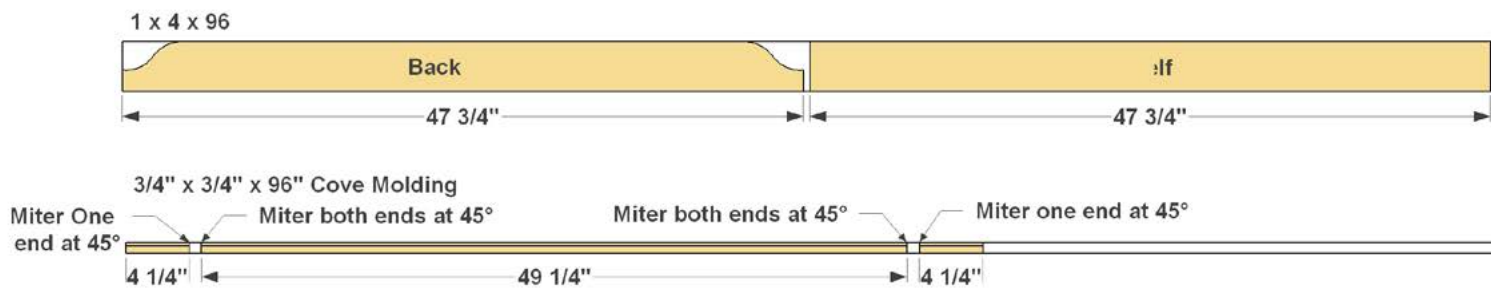
Qty	Description
(1)	1 x 4 x 96" pine board
(1)	3/4"-Thick x 48" cove molding
(8)	1 1/4" coarse-thread pocket screws
(2)	6" Hangman Picture Hanging Systems (or large sawtooth-style hangers)
	Wood Glue

Tools:

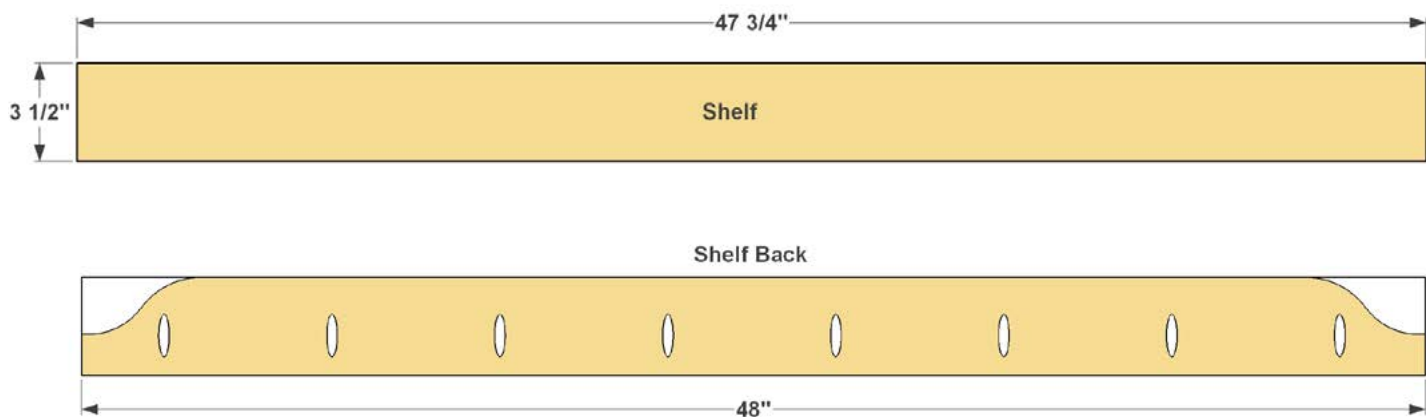
Drill/Driver
Kreg Jig®
Miter Saw
Jig Saw
Tape Measure

Pencil
Compass
Sandpaper and Sander
Paint or Stain
Optional Tools:
Kreg Square-Cut™

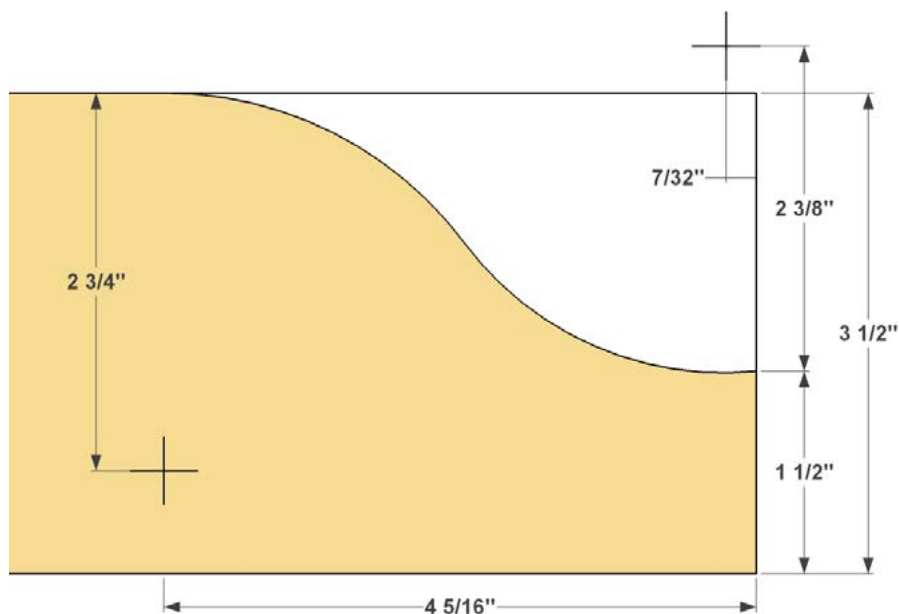
Cutting Diagram:



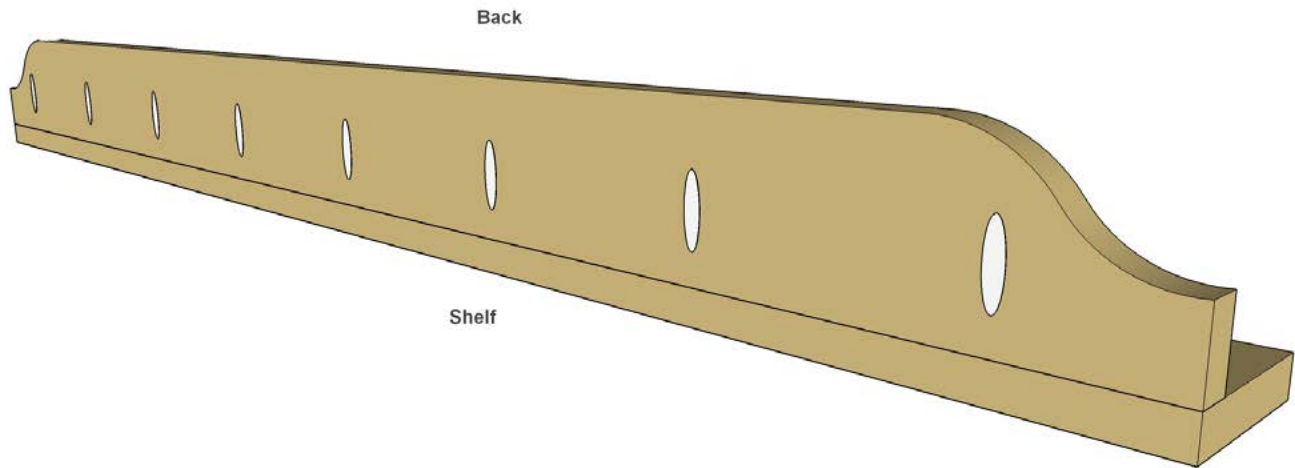
Step 1: Cut one Shelf and one Shelf Back to length from a 1x4 board, as shown in the cutting diagram. With your Kreg® Jig set up for 3/4" material, drill pocket holes in the Shelf Back, as shown.



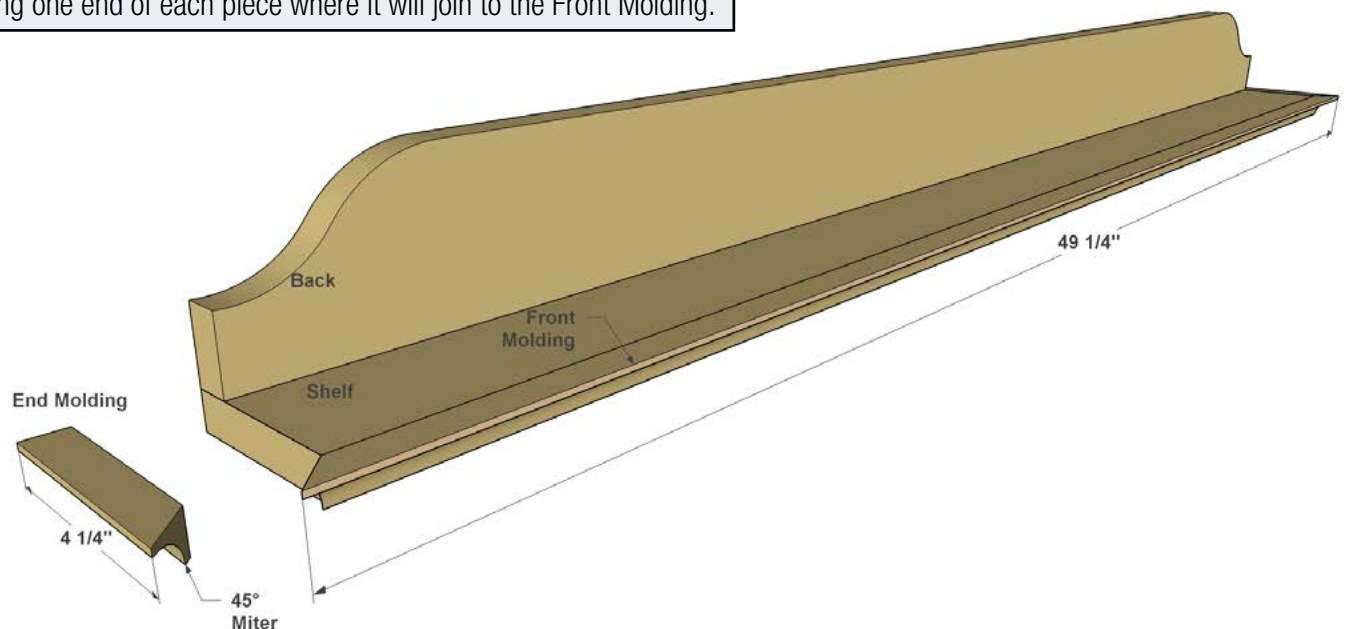
Step 2: Lay out the curved shapes on each end of the Shelf Back using a compass. You'll set it to a 2 3/8" radius for the outer curves, and to 2 3/4" for the inner curves. If the two arcs don't meet exactly when you lay them out, that's okay. Just connect the lines. Cut the shapes with a jigsaw, and then sand them smooth.



Step 3: After sanding the Back and the Shelf, connect them using 1 1/4" coarse-thread pocket-hole screws.



Step 4: Cut one piece of Front Molding to length, as shown in the cutting diagram. Note that each end gets mitered at 45° to allow the molding to wrap around the Shelf. Also cut two pieces of End Molding, mitering one end of each piece where it will join to the Front Molding.



Step 5: Glue the Front Molding and End Molding in place on the Shelf. Take care to align the miters. To hold the pieces in place as the glue sets, use masking tape.

Step 6: After the glue sets on the molding, you can sand as needed, and then stain, finish, or paint the photo shelf to suit your tastes. Then add hangers, and hang the shelf on the wall.